

ENCLOSURES

(FLUSH REAR PANEL MOUNT)

SERIES : EF.96

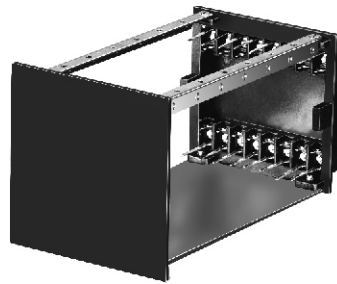
96x96x110/150

ISSUE - PIS/EF.96

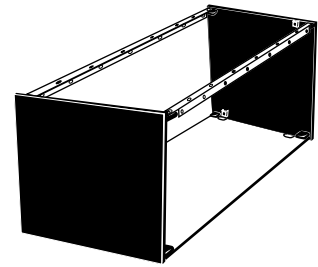
DATE : 01.10.12



HOUSING

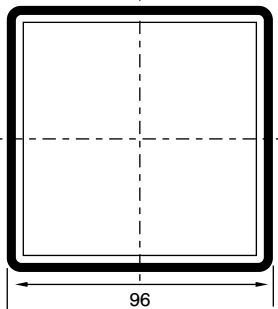


CRADLE with 16 Terminal

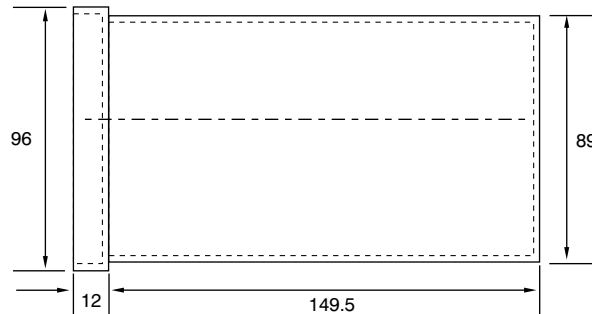


CRADLE with Plate

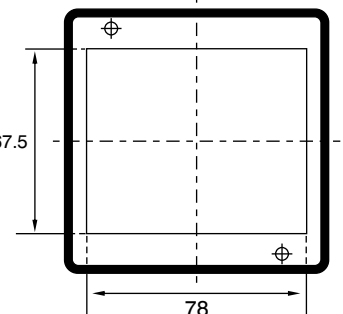
HOUSING



FRONT VIEW

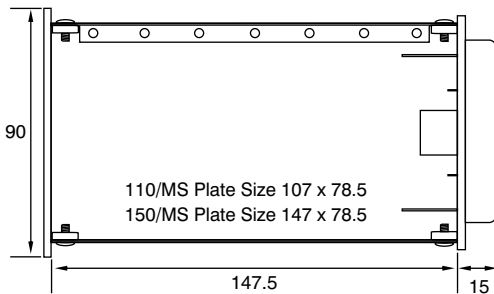


SIDE VIEW



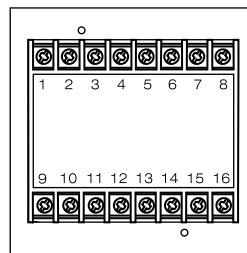
REAR VIEW

CRADLE with 16 Terminal



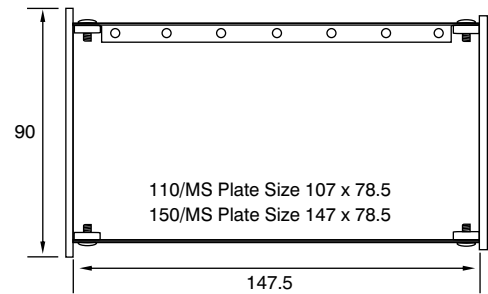
SIDE VIEW

CRADLE



REAR VIEW

CRADLE with Plate



SIDE VIEW

ENCLOSURE CODE : EF.96-110/150

PEPL manufactures Enclosures to International Standards with Flush Rear Panel Mount complete with mounting clamps (screw type) & cradle having Zinc Passivated Base plate and two channels. These enclosure are moulded in ABS and are suitable for Temperature Controllers / Indicators, Digital timers / Counters and other Electronic / Electrical Instruments, Sub-Systems etc. The Enclosures can be offered with Front and Rear Terminal plate with 8x8 Terminal's or plain rear plate.

MECHANICAL SPECIFICATIONS

SERIES	EF.96/110	EF.96/150
HOUSING	96x96x110	96x96x150
CRADLE	109x72	147x 72
MATERIAL	ABS	ABS
COLOUR	BLACK/GREY	BLACK/GREY
WEIGHT WITH ACCESSORIES	280gms	350gms
ACCESSORIES	MTG. CLAMP STUD	MTG. CLAMP STUD

ORDERING CODE

SERIES	SPECIFICATION	COLOUR
EF.96	11-110mm 15-150mm	B-BLACK G-GREY

EF.96-15-B

Manufactured by:

piri electrols pvt. ltd.

A-28, Royal Industrial Estate, Naigaum Cross Road, Wadala, Mumbai 400031. INDIA.

☎ (022) 2412 8342/43 • Fax: (022) 2414 9077 • E-Mail : piriectrols@gmail.com • Website : www.pirielelectrols.com

